

# Saint Mary's University Update

Southeast Minnesota GIS User Group

June 1, 2023



Saint Mary's  
University  
of MINNESOTA

# Saint Mary's University of Minnesota

Rochester Campus

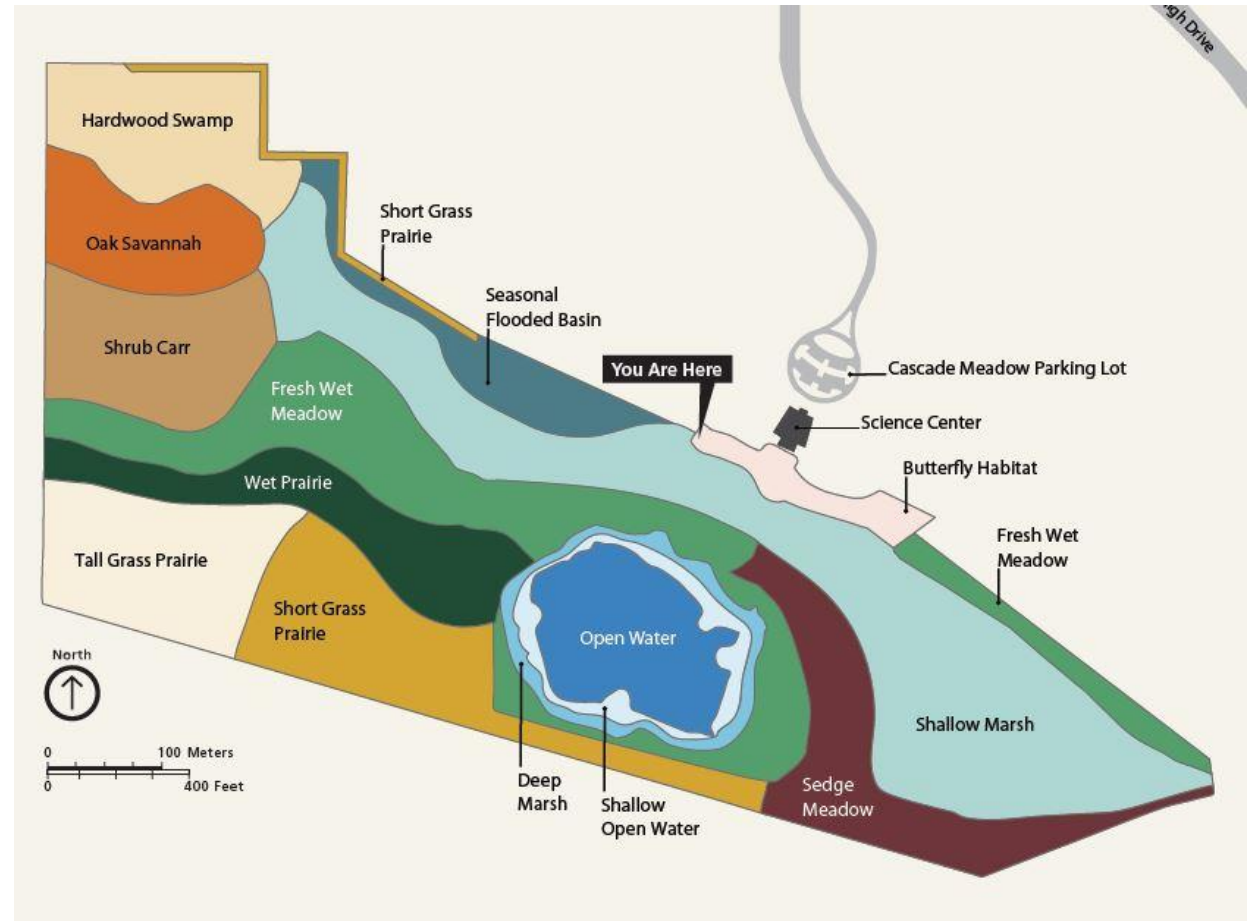
# Rochester Campus

- 100 acre site
- 16,000-square-foot, LEED® Platinum, environmental science center
- Acquired by Saint Mary's in 2015



# Rochester Campus

- 7 wetland types & 3 upland (dry) habitats comprise 90 acres of natural areas
- We still refer to the wetlands/prairie areas as Cascade Meadow Wetlands and Environmental Science Center



# Rochester Campus

- 10,000-square-foot addition completed in 2018
- Built in support of the Physician Assistant (PA) Program
  - 3 years in Winona and 2 years in Rochester
  - In cooperation with the Mayo Clinic School of Health Sciences



# Rochester Campus Programs

---

- Masters in Counseling and Psychological Services
- Doctorate in Leadership
- MBA
- Masters in Teaching and Learning

# M.S. in Data Intelligence and GeoAnalytics (ie. MS DIGA)

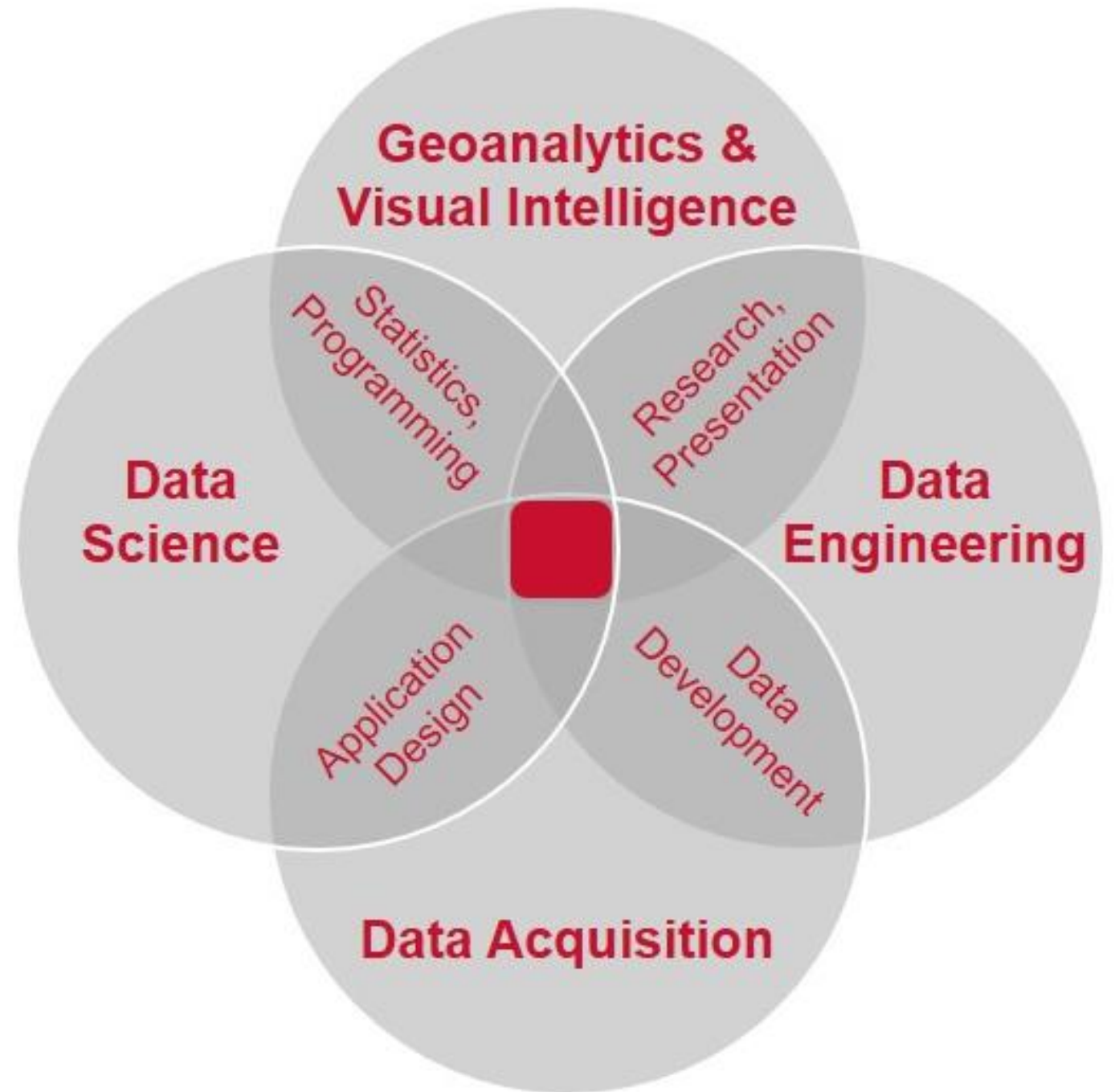
Revision from M.S. in Geographic Information Science

# GIS is Often Missing from the Job Title

- Public Safety Applications Supervisor
- Software Engineer
- Analytic Methodologist
- Operations Workflow Coordinator
- Emergency Management & Business Continuity Coordinator
- Investigative Analyst
- Senior Permitting Manager
- Strategic Advisor
- Director of Research & New Product Development
- Research Analyst
- Development Program Lead

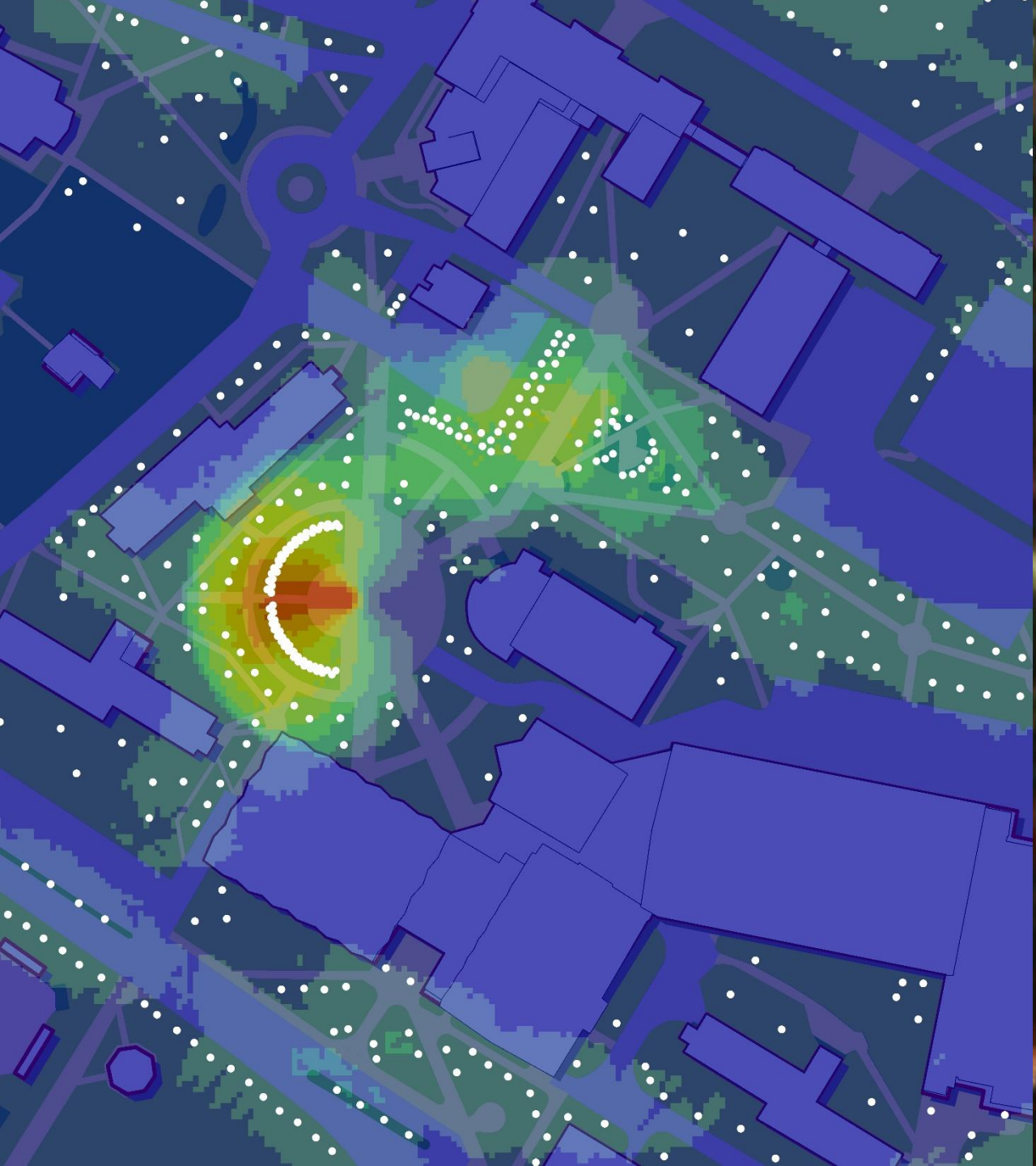


New degree name  
reflects broader  
base of skills and  
application areas



# M.S. Data Intelligence & GeoAnalytics

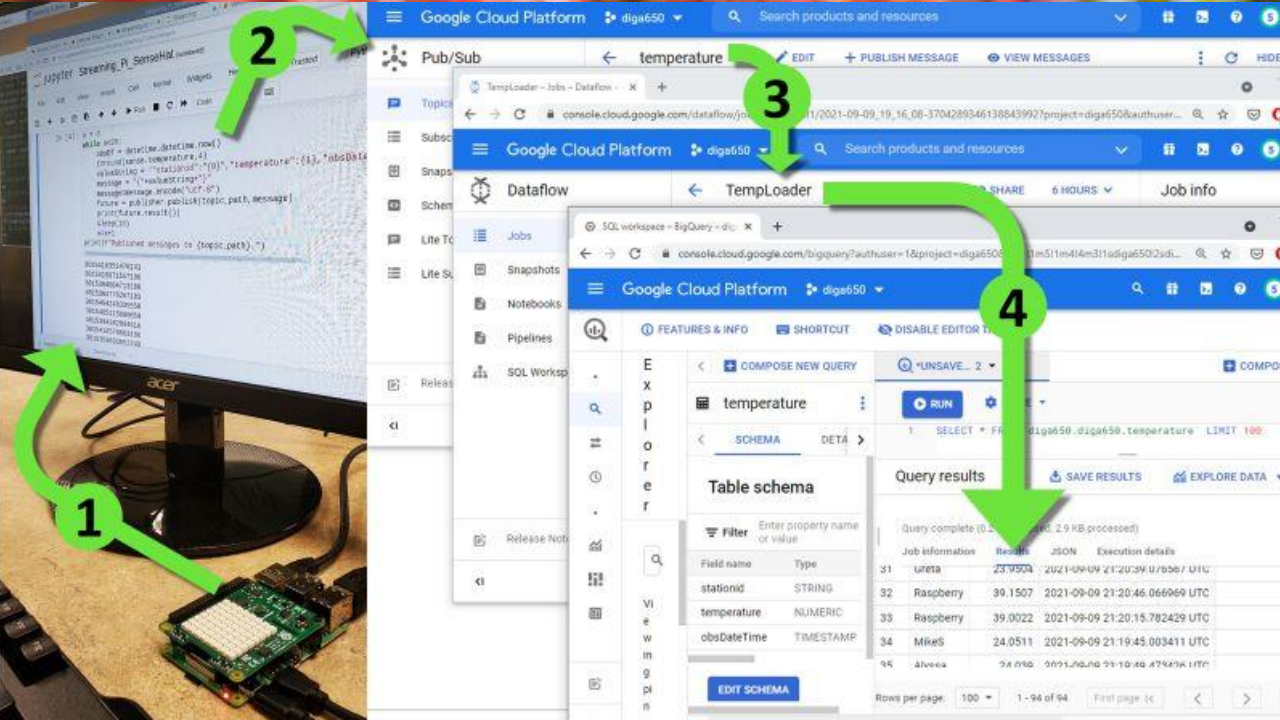
- 36 credits (12 x 3 credit courses)
- 8 week courses (accelerated)
- Online instruction; virtual interaction
- 2 year completion is typical; 12 month (one year) accelerated option is also a great option



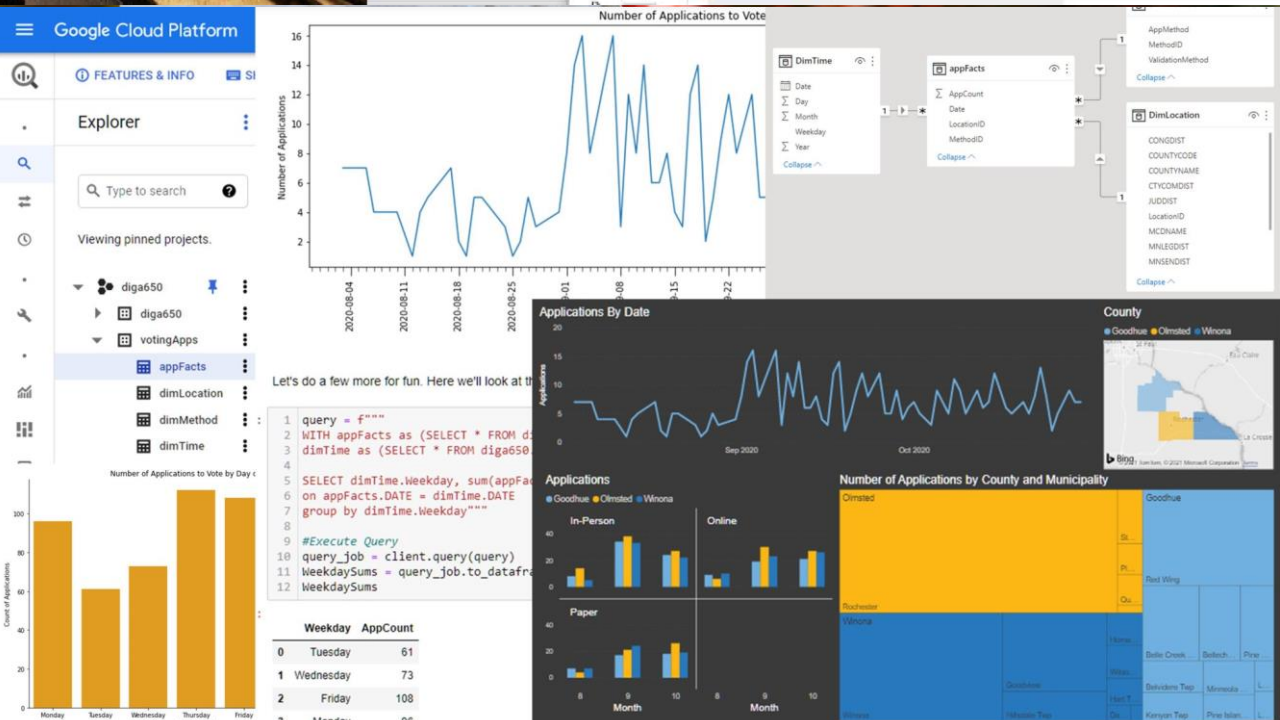
Graduate Certificates

# GIS Certificate

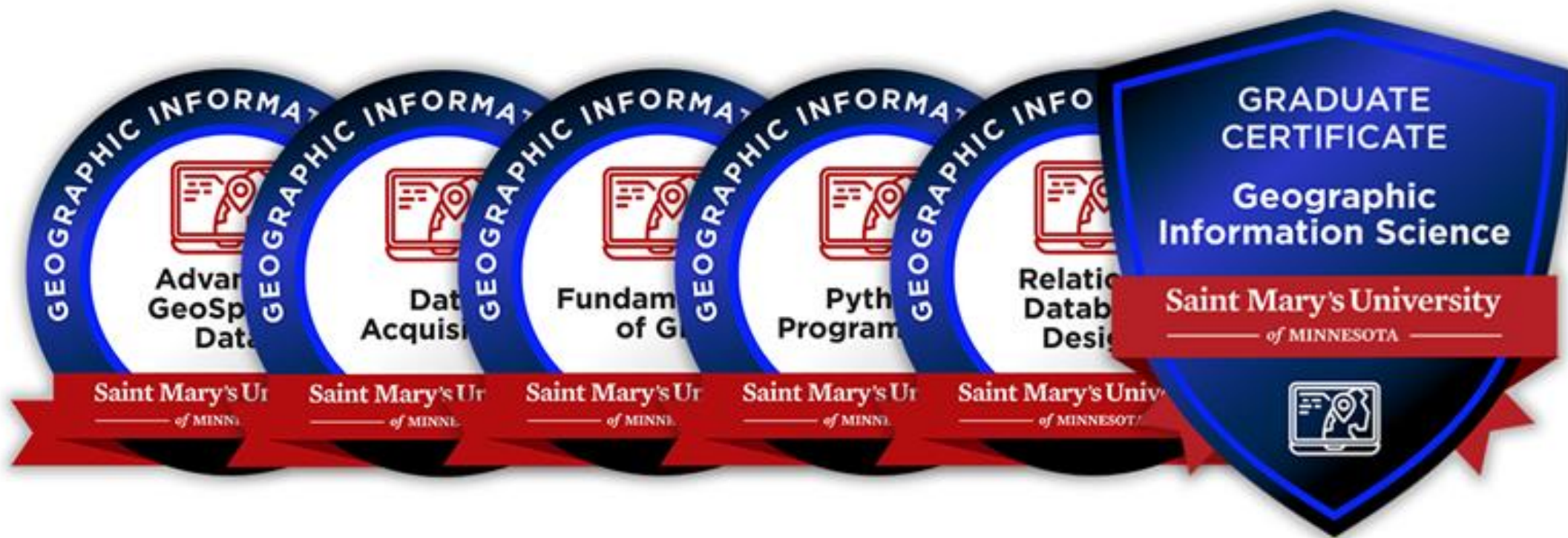
- 
- 15 credits (5 x 3 credit courses)
  - Focus on GIS technology skills
  - Credits count towards M.S. DIGA



# Graduate Certificates Data Engineering Certificate



- 15 credits (5 x 3 credit courses)
- Focus on data development, processing, and visualization
- Credits count towards M.S. DIGA



### Stackable Credentials

# Digital Badges

---

- Certify course completion
- Stack into certificate
- Online promotion (e.g., LinkedIn)



Saint Mary's GeoSpatial Services continues work with tribes

lacrossetribune.com • 3 min read



Campus Connection: GSS at Saint Mary's garners 99% placement rate for student workers

winonadailynews.com • 3 min read

## Work Experience

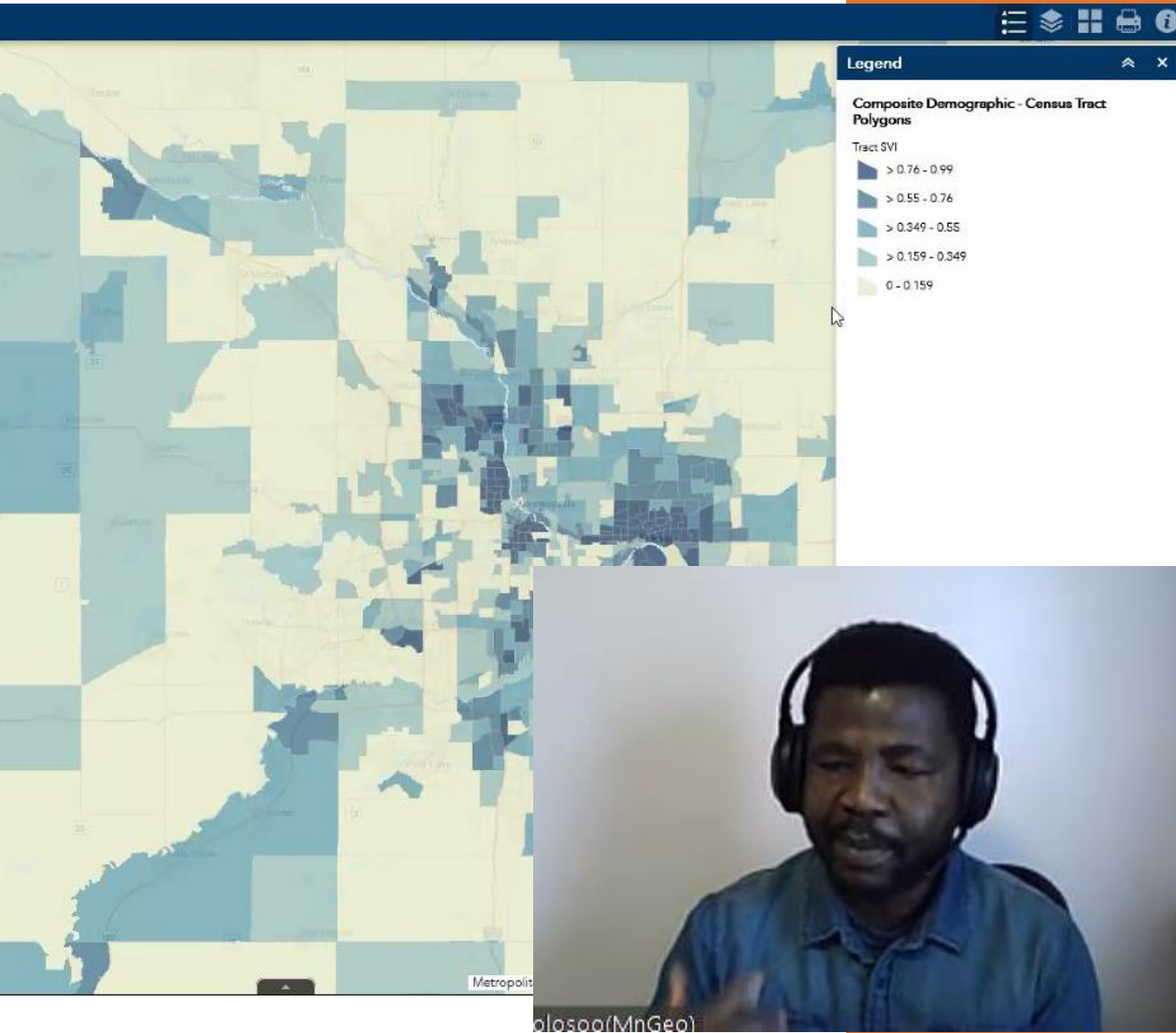
# GeoSpatial Services (GSS)

- 
- Project Center
  - Integrates professional services & academic apprenticeships
  - National Wetland Inventory, National Hydrography Dataset, Natural Resource Condition Assessments

# Alumni Updates

Where are they now?

- Newsletter Series featuring alumni and current students ([Sample](#))
- Usually create two newsletters a year (via linkedin mostly now)



State Government

# Elorm Agbolosoo

- 
- Minnesota IT Services
  - Active in Covid-19 response
  - Vaccine deserts, Social vulnerability

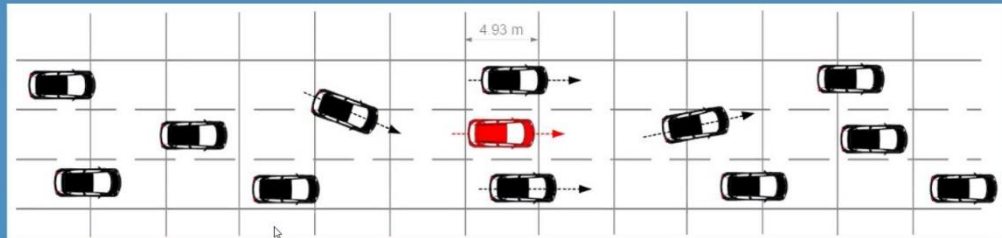




Consulting

# Daniel Hamalainen

## Neighbor Grid & Convolutional Social Pooling



$n_a$				$n_e$		$n_f$				$n_k$
		$n_c$				$v_i$		$n_h$	$n_l$	
$n_b$			$n_d$			$n_g$		$n_j$		$n_m$

- JR. GIS Analyst at Evari GIS Consulting, Inc. In San Diego, CA
- Municipal GIS applications including planning, traffic, street lighting, infrastructure, utilities, energy, AEC and asset management projects.



Energy

# Cristina Lopez Barrios

- Senior GIS Programmer Analyst for PG&E
- Gas Transmission Integrity Management Team - promotes safety and risk mitigation along pipelines
- Develops models and automated workflows for data analytics and decision making



Engineering

# Tyler Danielson

- 
- GIS Project Manager at Bolton & Menk, Inc



Emergency Response and Regional Planning

# Priyanka Chakrabarti

- Former GIS Analyst for the New South Wales Rural Fire Service
- Senior GIS Analyst at New South Wales Department of Planning, Industry, and Environment

# Opportunities to Get Involved?

R&D | Grant Opportunities

Career Pathways and Internships

Connect with us on LinkedIn | [www.smumn.edu](http://www.smumn.edu)