

City of Red Wing GIS

Southeastern Minnesota GIS Users Group

September 7, 2006

Leanne Knott-GIS Specialist

City of Red Wing Planning
Department

Welcome & Introductions

- **Leanne Knott-GIS Specialist**

- Completed undergrad work at the U. of M. in Geography (1991)
- Minor in GIS at UW River Falls in 2005
- Published author of historical novel 'The Keeper's Daughter'
- Married with 3 school-age sons (husband Dan recently mobilized to overseas duty in Iraq).

- **Maggie Voth-GIS Summer Intern**

- Just graduated from Luther College in Decorah, Iowa with a double major in biology & sociology
- Planning to attend graduate school in wildlife conservation & GIS at the U of M
- Long-time resident of rural Red Wing & stage management volunteer at the Sheldon Theater

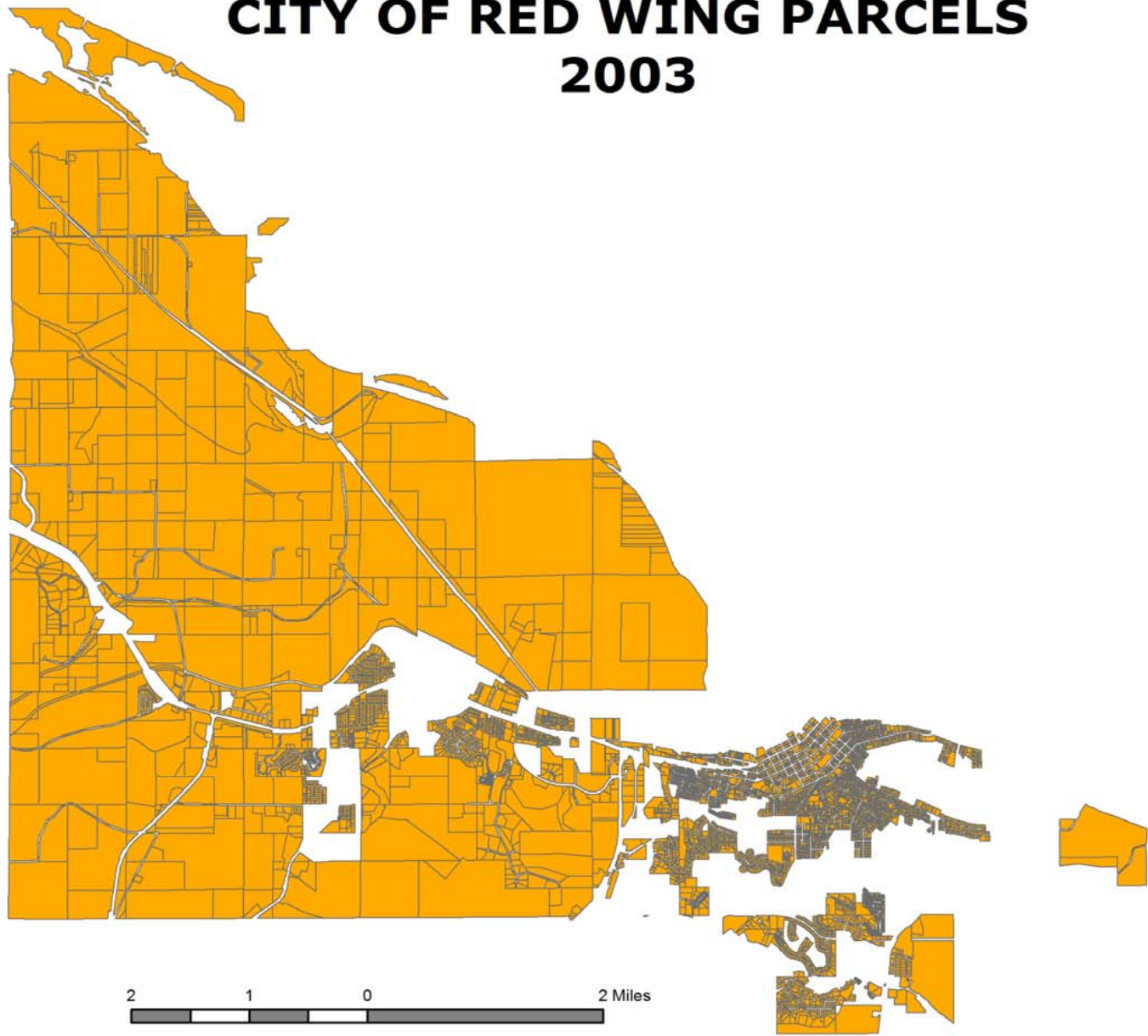
Red Wing GIS History

- The City of Red Wing had discussed a GIS implementation since 1992 with limited results. The Goodhue County Surveyor and Land Records Office had initiated a GIS implementation, but suffered delays due to staff vacancies.
- SEH (Short Elliot Hendrickson) was contracted by the City to complete a GIS Development Plan in 2004.

Parcel Data Layer History

- CAD data conversion into GIS parcels by Goodhue County Land Survey/GIS Department in 2003.
- Out of 7,600 parcels, almost 1,300 were missing.

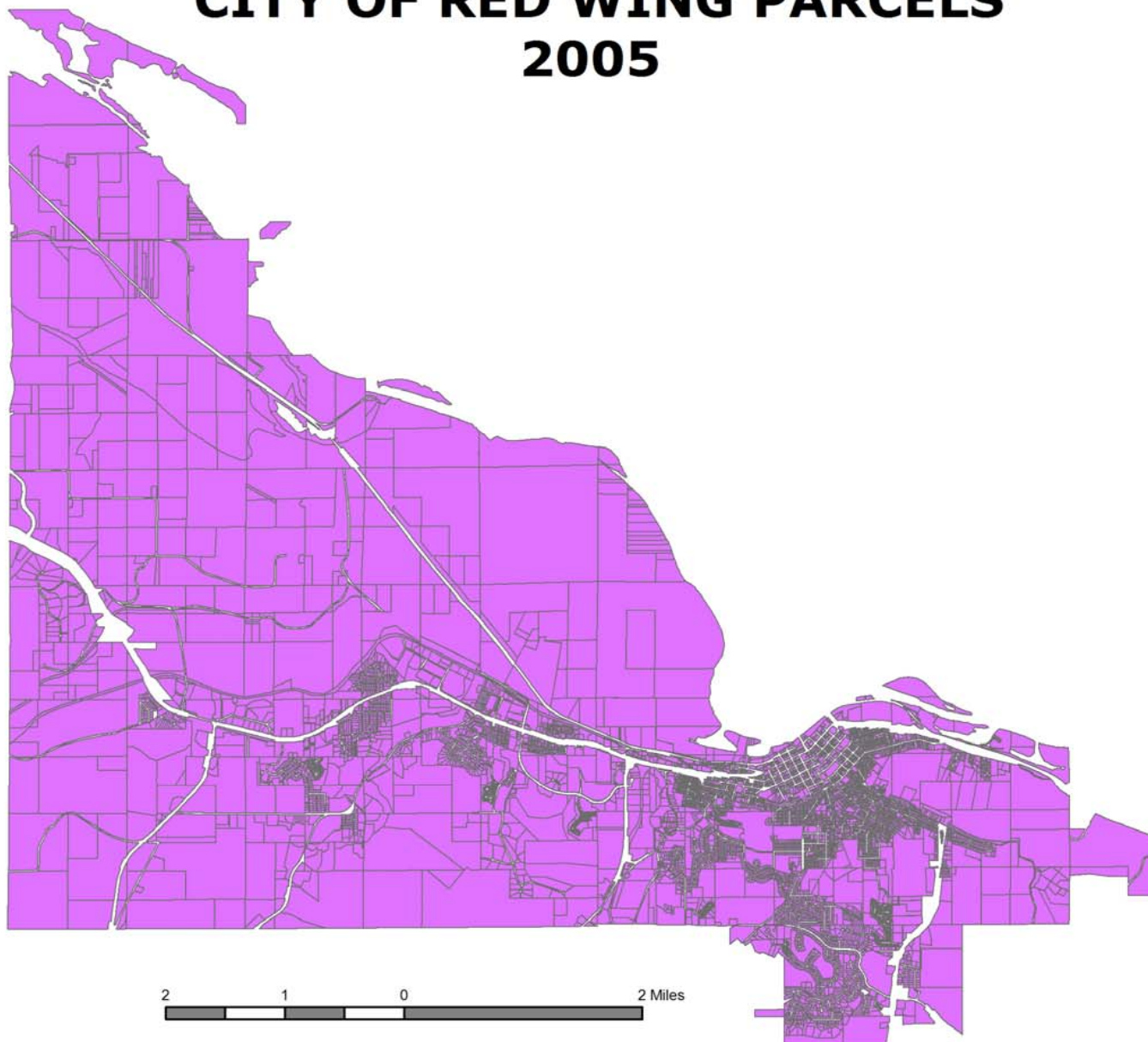
CITY OF RED WING PARCELS 2003



Parcel Data History cont.

- In January 2005, GIS Intern Leanne Knott began process of completing polygon layer.
- Georeferenced scanned Goodhue County tax plats and digitized missing polygons.
- Parcels and attributes updated at Goodhue County and the data loaded in City of Red Wing server.

CITY OF RED WING PARCELS 2005



2 1 0 2 Miles



Parcel Data Updates

- Layer completed in January, 2005.
- Interim editing using 2005 aerial base photos.
- Goodhue County has now assumed maintenance on all plats, splits, and edits.
- Editing completed in SiteComp and saved into replacement shapefile on quarterly basis.

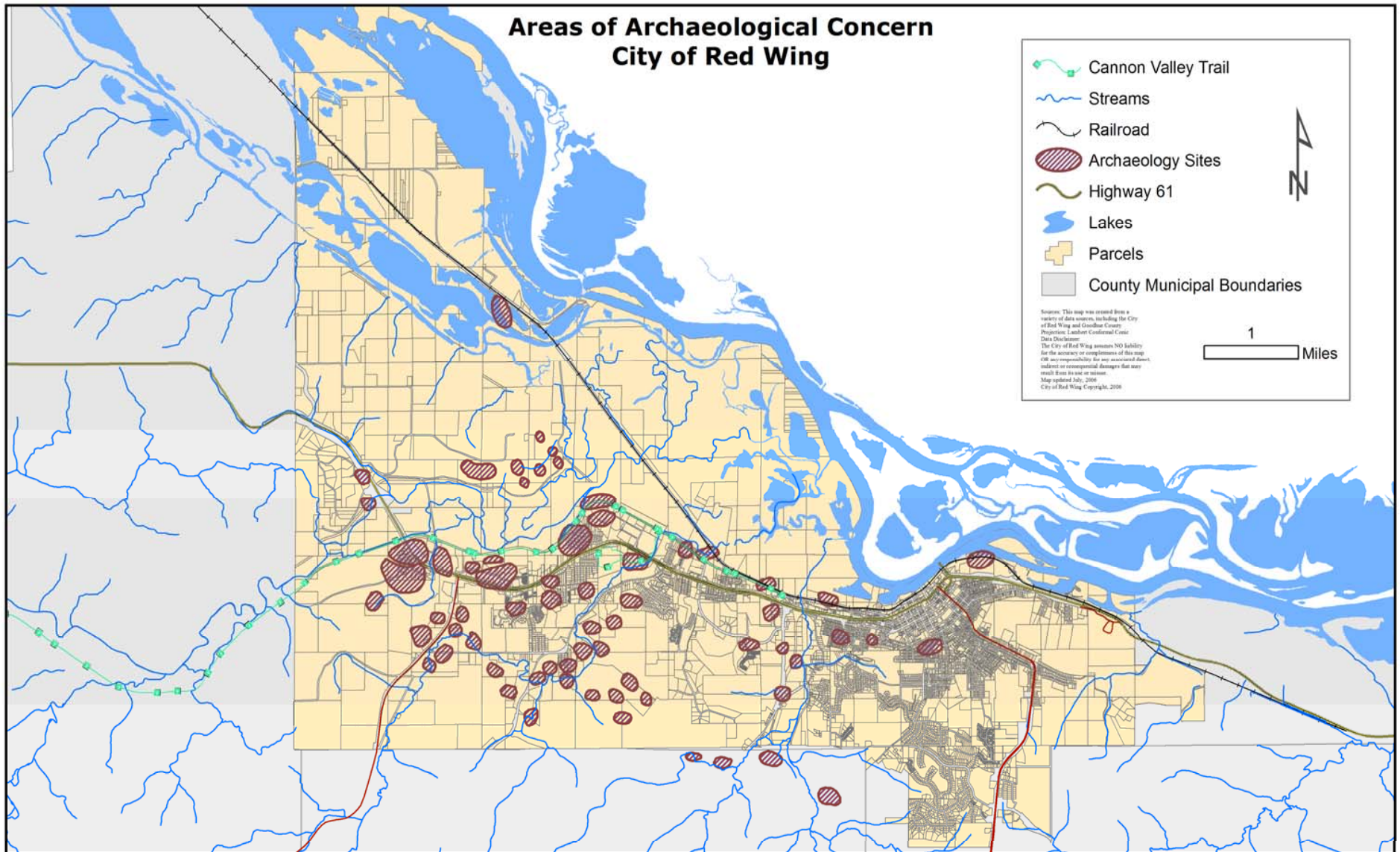
City of Red Wing Data Sources

- Goodhue County
- Minnesota DNR
- City of Red Wing staff

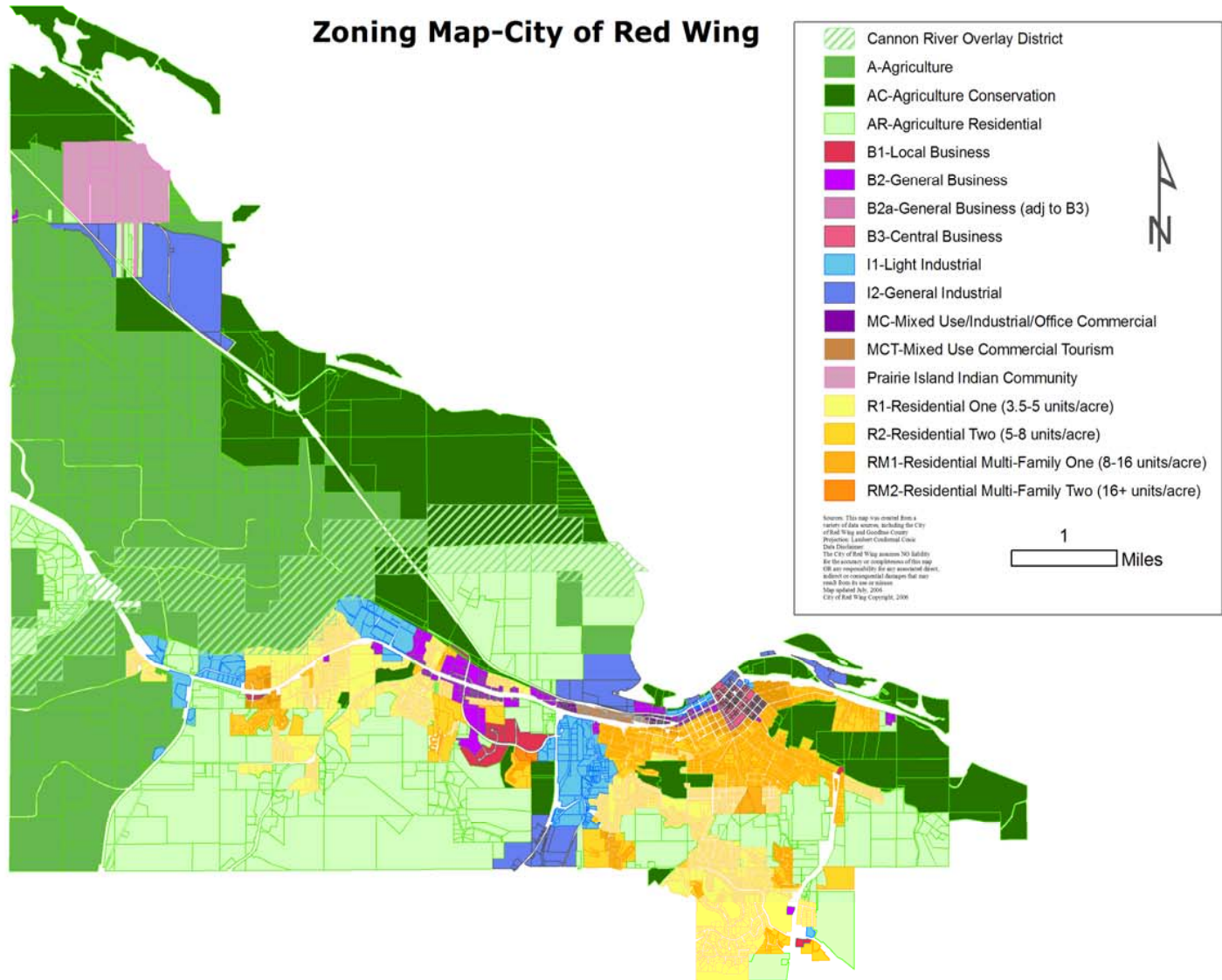
Sample Projects

- Archaeology mapping
- Zoning
- Land Use
- Market Inventory Project
- Footprints
- RoweMap Patrol software

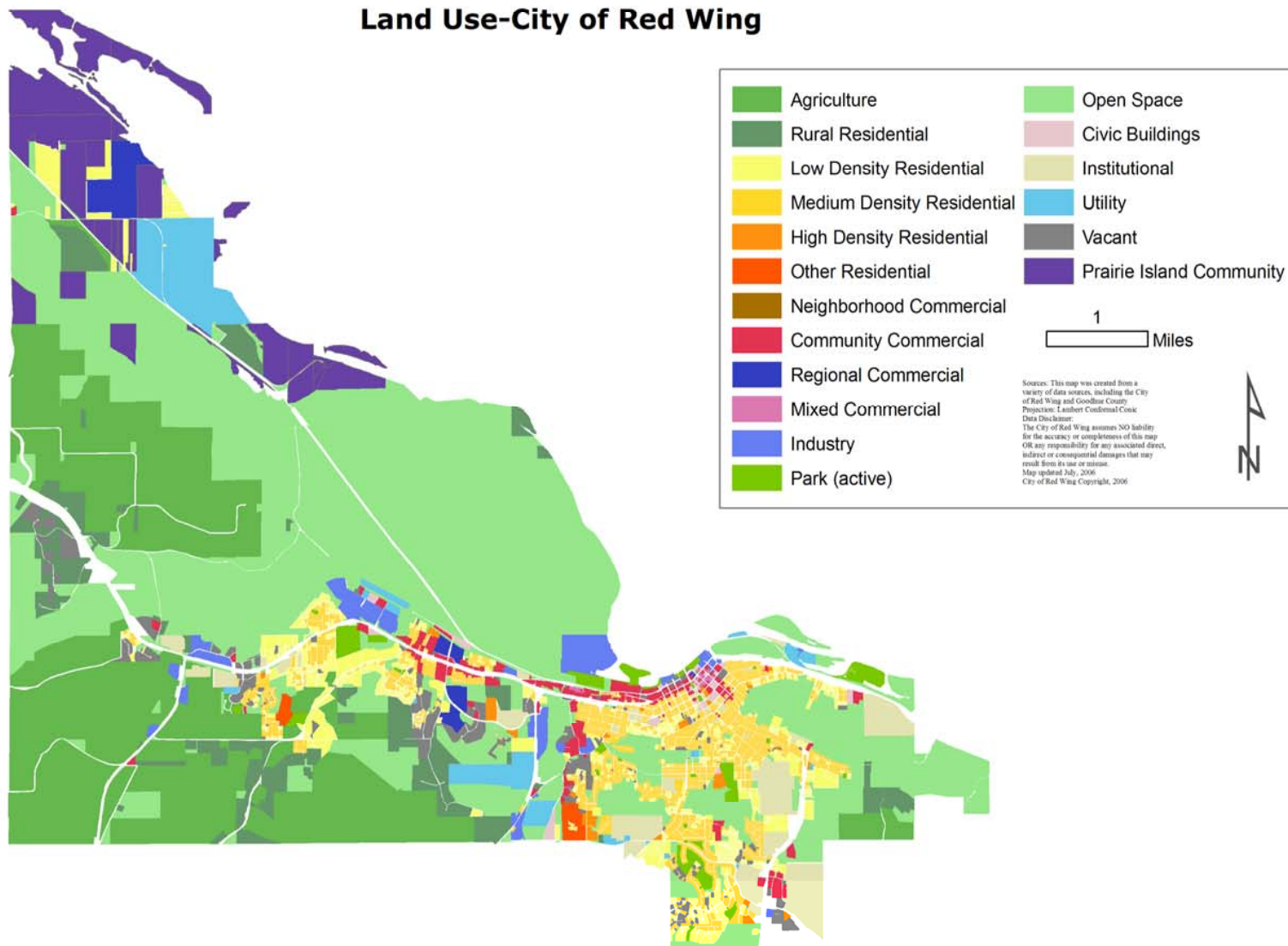
Areas of Archaeological Concern City of Red Wing



Zoning Map-City of Red Wing



Land Use-City of Red Wing



Maggie Market Project

5000 Footprints: August 22, 2006

Older Neighborhoods East of Bench Street



RoweMap Patrol Demo.

- City of Red Wing Police Chief Tim Sletten requested desktop mapping viewer for Police Department.
- 2 seats of RoweMap Patrol were purchased and installed on department laptop & Command Vehicle desktop.

Web Mapping

- City is partnering with Goodhue County to post local data to online mapping application.
- New data updates added quarterly.
- Demonstration

2007 Work Program

- Challenge: data distribution/viewing for City staff
- Currently examining per seat desktop applications vs. server oriented architecture
- Cost, number of users, interest in centralized distribution are factors
- Implementation of Springbrook finance software includes a GIS component linking land records, infrastructure, billing, and permits.
- Mobile GIS possibilities with expansion of fiber network throughout the city.

Questions?

- Contact GIS Specialist Leanne Knott
- Phone # (651)385-3619
- E-mail leanne.knott@ci.red-wing.mn.us