

Minnesota's Next Generation 9-1-1 GIS Initiative

Status Update: 11-5-15



This Morning's Presentation...

- NG9-1-1 Overview
 - What is NG9-1-1?
 - Who is involved in Minnesota?
 - Current Activities:
 - *PSAP RFI Summary Report*
 - *Initial NG9-1-1 GIS Data Collection*
 - *NG9-1-1 GIS Data Assessment and Preparation*
 - *Minnesota NG9-1-1 GIS Standards*
 - *Communication Plan*
- SE Minnesota MnGeo Contact
- Questions



What is NG9-1-1?

- **Next Generation 9-1-1**
 - Modern evolution of 9-1-1
 - “Any device, anytime, anywhere”
 - Access to more data and information

GIS Data in NG9-1-1

- **Location validation** of devices capable of calling 9-1-1
- **Route 9-1-1 calls** to the proper destination
- Determine the correct **emergency response** agency
- Enhanced data quality, interoperability, and sharing
- Streamlined data maintenance



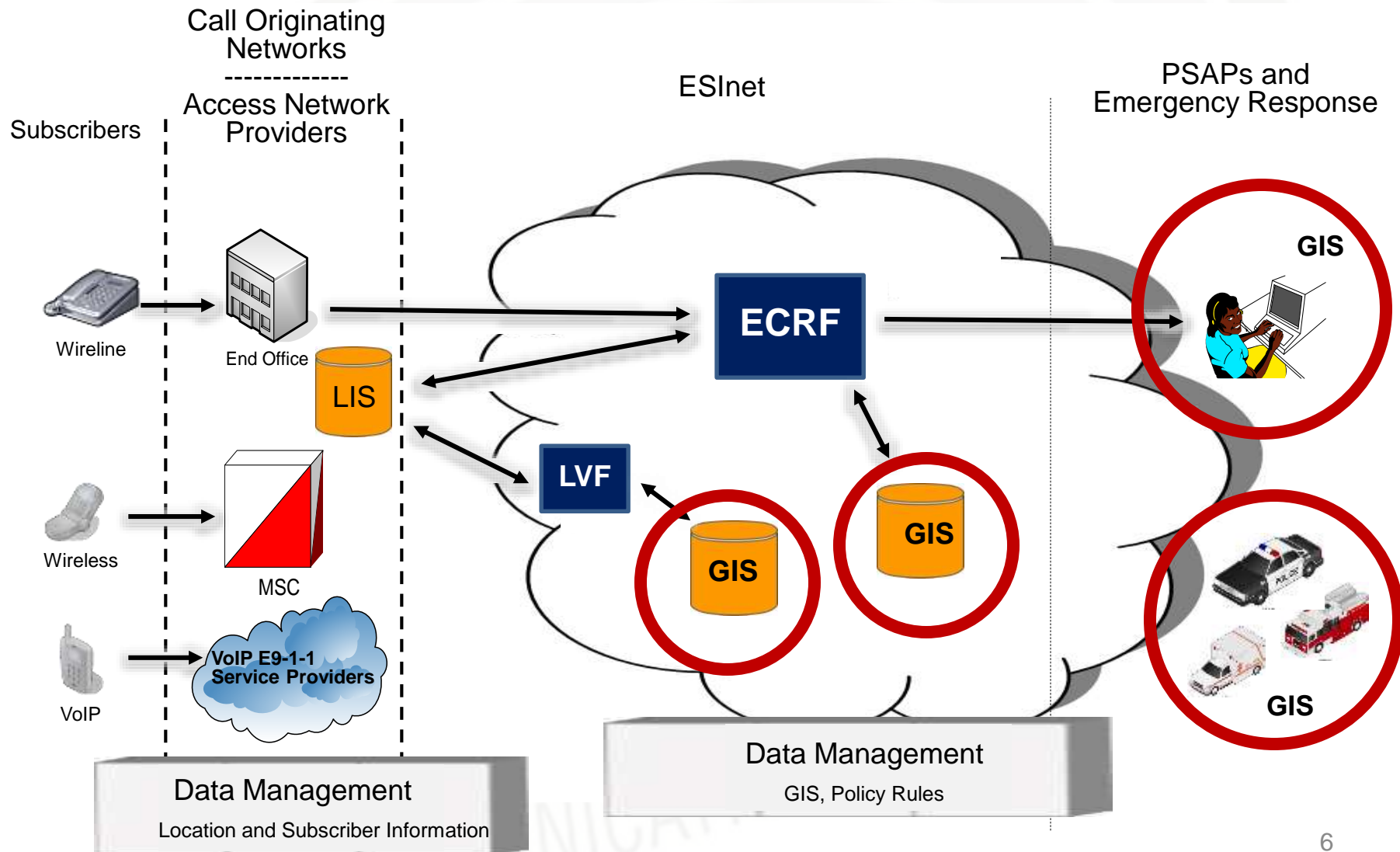


Why Are We Involved?

Per MN State Statute 403.025 Subd. 1: Minnesota Counties have the responsibility to operate and maintain the 9-1-1 system in their respective counties

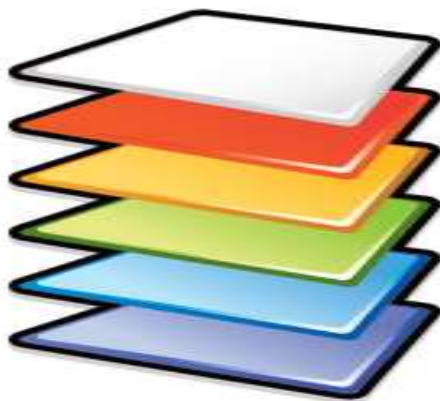
- GIS today is used to **support** CAD and ALI mapping systems
- GIS in NG9-1-1 will become the **primary** element for performing call routing and location validation in the NG9-1-1 system
- Counties and PSAPs retain responsibility for data
 - Today: MSAG and ALI
 - Future: GIS data

GIS in NG9-1-1



Required:

- Street Centerlines
- Address Points
- Emergency Service Boundaries
 - Fire
 - Law Enforcement
 - Emergency Medical Service
 - PSAP
- Authoritative Boundaries

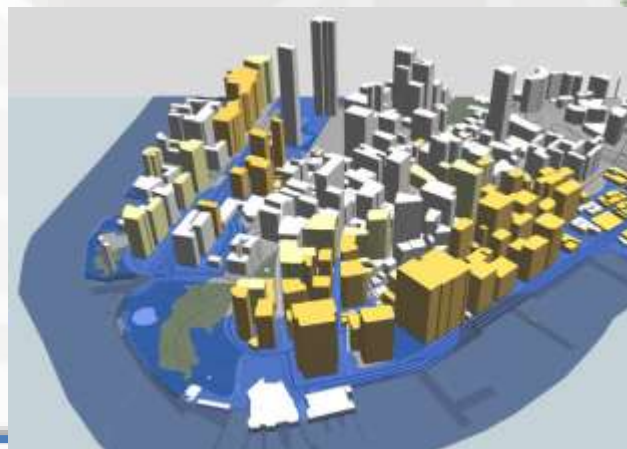


Recommended:

- Community Boundaries
- Parcels
- Water Features
- Railroads
- Hiking, ATV, Snowmobile Trails
- Driveways
- Mile Markers
- Common Places
- Cell Towers and Sectors
- Pipelines
- AVL
- Weather, Camera, Traffic Feeds
- Imagery
- 3D Landscape and Buildings
- National Grid
- Premise Info

Public Safety GIS Trends

- Real-time events – weather, traffic, construction, special events
- Controlled crowd sourcing
- Cameras
- Premise information
- Hyperlinks
- Routing
- 3D modeling





Objectives and Deliverables

- **Actively engage PSAPs, federal, tribal, state, regional and local jurisdictions** in Minnesota in the collection, aggregation and maintenance of geospatial data required for NG9-1-1 and related PSAP and emergency responder needs.
 - **Identify “core” NG9-1-1 geospatial data** that may be available from federal, tribal, state, regional and local jurisdictions in Minnesota.
 - **Identify areas of the State** where geospatial data and accuracy can be improved.
 - **Define common data models** and successfully transition collected data to the defined schemas.
-



Objectives and Deliverables

- **Establish a long-term communication** plan to keep participants engaged and informed
 - **Construct a viable path** to obtain and/or develop, maintain, update, aggregate and standardize these data.
 - **Identify sustainable long-term maintenance requirements and data custodians.** Determine resources necessary for a repeatable process for gathering, aggregating, standardizing, and storing the data for the State of Minnesota.
 - **Documented GIS data collection, assessments, and quality control procedures with discrepancy reports** sent to the GIS data authoritative sources and PSAP Managers to allow for continuous improvement of data quality and integrity.
-



Objectives and Deliverables

- **Coordinate with existing Minnesota NG9-1-1 providers and the Minnesota Department of Public Safety Emergency Communication Networks division** to determine and implement the requirements and mechanisms to interface with ECRF/LVF solution vendor(s) to interface according to NENA GIS Standards.
 - **Develop transition plan to migrate from tabular MSAG** legacy 9-1-1 call routing to NG9-1-1 geospatial based routing and location validation (ECRF and LVF).
 - **Make statewide geospatial data available** to stakeholders and provision data to NG9-1-1 services (ECRF and LVF).
-



Benefits

- **Improved quality of emergency services** to citizens and visitors of Minnesota
- **Potential cost reduction** of providing authoritative GIS data and services for multiple uses
- **Improved response** by first responders – potentially saving lives
- **Multi-jurisdiction (state, county and community) coverage** for first responders



Benefits

- **Improved reporting and situational awareness**
- **Ability to collaboratively create, maintain and update statewide data layers once and share with many** local, regional and state entities
- **High quality, current GIS data will be available to other agencies** including emergency management and a number of state and local government entities using GIS data

Roles and Responsibilities

Who's involved?

- Government: Tribal, City, County, Regional, State, National
 - DPS, MnGeo, DOT, DNR
 - SECB, NG911 Committee, GIS Subcommittee
 - MESB, MetroGIS, LOGIS, MRCC, GIS TOC WG
 - City and County GIS Departments
 - PSAP Managers
 - Call takers, Dispatchers, and Responders
 - MSAG Coordinators
 - Addressing, Planning and Zoning, Assessor's Office
 - Schools, Colleges, and Universities
- Vendors and Contractors





Roles and Responsibilities

ECN

- Lead agency
- Overall coordination and oversight

MnGeo

- Coordination of GIS data collection, aggregation, development, standardization, quality assurance and maintenance of geospatial data needed for NG9-1-1
-



Roles and Responsibilities

PSAP Managers/MSAG Coordinators

- Establish partnership with GIS data authority
- Track map updates
- Review and correct 9-1-1 data discrepancies

Dispatchers

- Flag and report all map discrepancies

GIS Managers

- Establish partnership with PSAP
 - Review and correct GIS data discrepancies
 - Prioritize GIS issues for public safety
-

Current Activities: NG9-1-1 GIS Data Collection

- All Regions in the State:
 - Public Safety Answering Point (PSAP) boundaries
 - Emergency Service boundaries
 - Fire
 - Law Enforcement
 - Emergency Medical Service
- Metro and NE Regions Only:
 - Street centerlines with address ranges
 - Address points



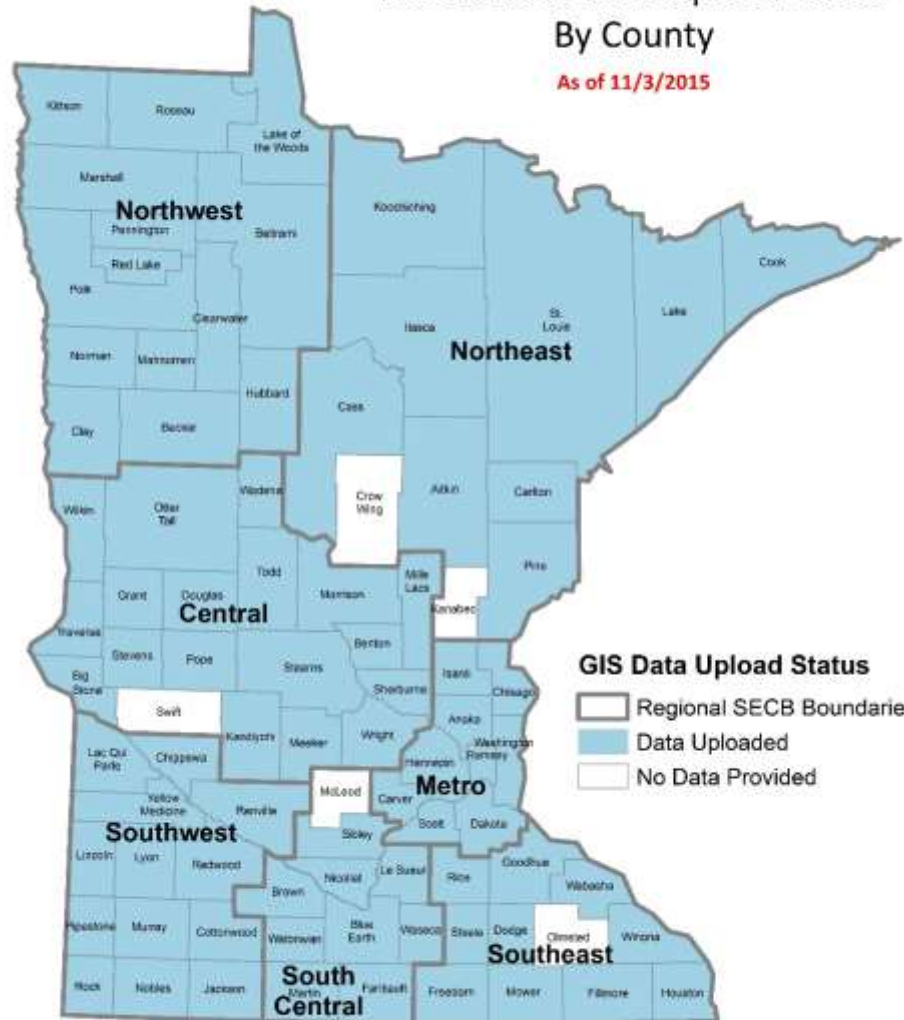
NG9-1-1 GIS Data Assessment and Preparation

- NG9-1-1 GIS data request
 - **FirstNet** – needs all Public Safety Entity boundaries for reporting purposes
 - **MnGeo** – inventory existing NG911 GIS data, build internal processes, field mapping (local vs NENA schemas)
- Gaps/overlap corrections
- GIS data workflow and repository
- Document and assist with MESB's current 9-1-1 GIS data preparation processes in Metro region
- Plan for pilot regions (Metro and NE)



NG9-1-1 GIS Data Upload Status By County

As of 11/3/2015



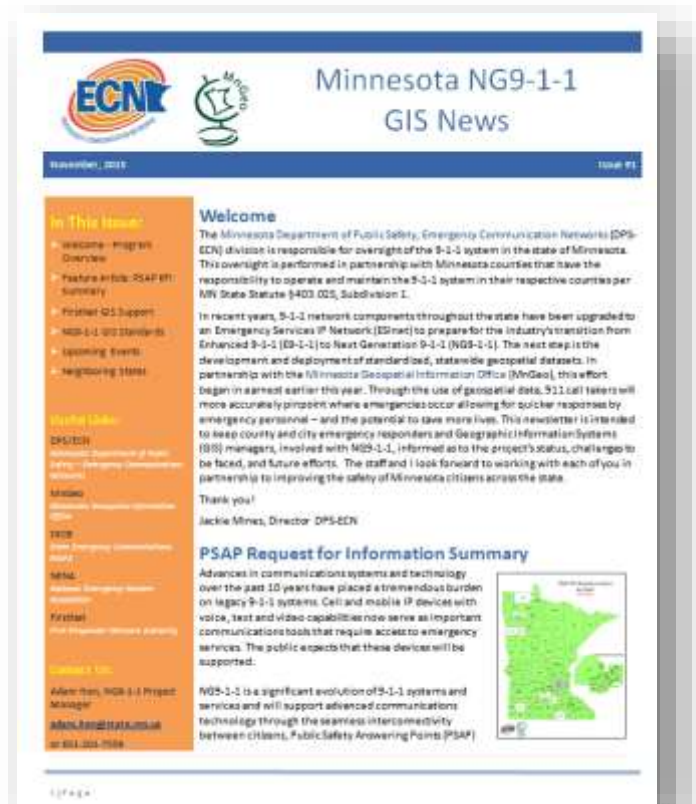
Collection Status

Minnesota NG9-1-1 GIS Standards

- GIS data requirements for NG9-1-1 in Minnesota
- Align with NENA Standards
- Standards Workgroup Meeting Weekly
- Review and approval
 - Metropolitan Emergency Services Board (MESB)
 - GIS Subcommittee
 - NG9-1-1 Committee
 - Statewide Emergency Communications Board (SECB)
 - Statewide Geospatial Advisory Council (SGAC)
 - MN Information Technology Agency (MNIT)
- Other States

Communication Plan

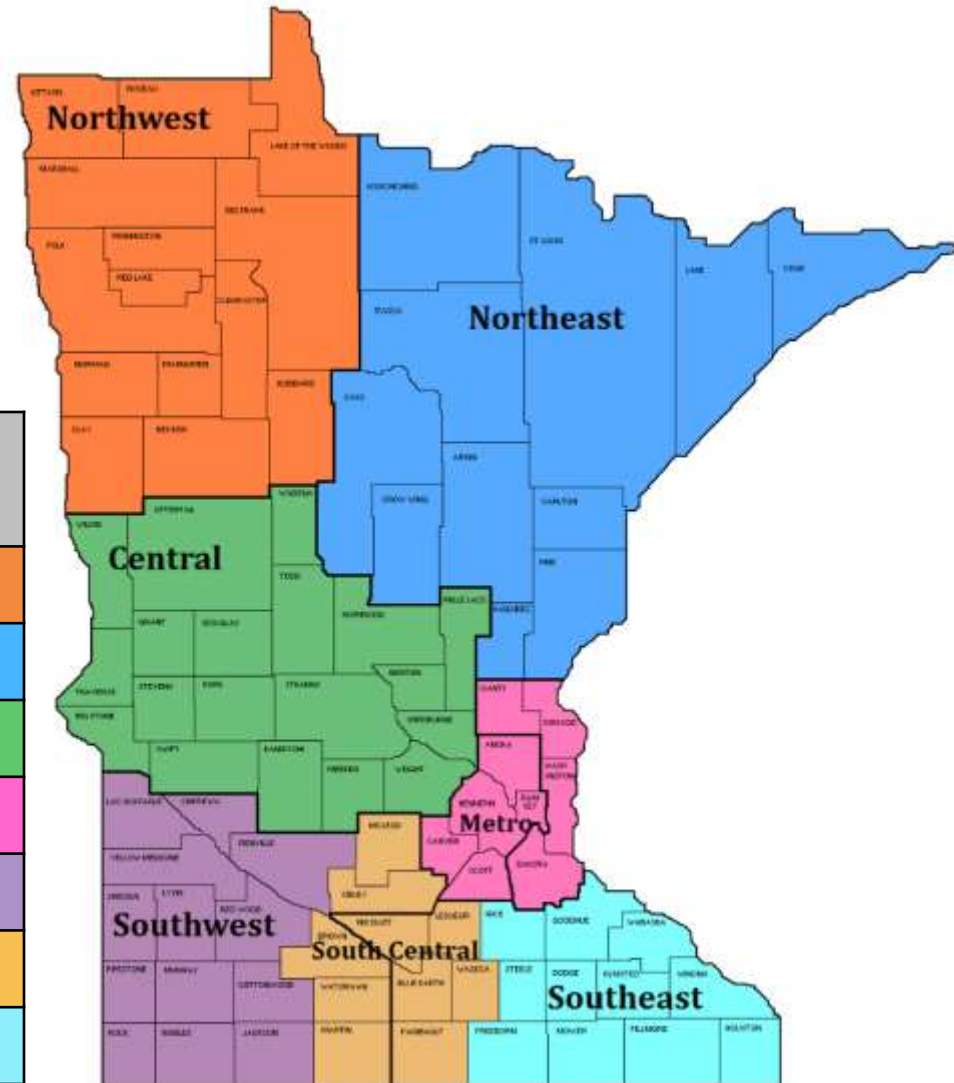
- DPS-ECN website
- Monthly
 - Project newsletter
 - GIS Subcommittee meeting
 - NG9-1-1 Committee meetings
 - SECB meeting
- Quarterly
 - Regional PSAP/GIS meetings
 - Statewide Geospatial Advisory Council



Communication Plan

7 Regions

Region	Primary Contact	Backup Contact
Northwest	Dolbow	Ross
Northeast	Dolbow	Ross
Central	Ross	Dolbow
Metro	Bunning	Ross
Southwest	Bunning	Ross
South Central	Bunning	Ross
Southeast	Hoshal	Bunning



Thank You!

Adam Iten, Project Manager
Adam.Iten@state.mn.us
651-201-7559

John Hoshal, GIS Special
Projects Coordinator
John.Hoshal@state.mn.us
651-201-2482

